



Charles Webster Hawthorne, *A Study in White*, c. 1900, oil on canvas. Museum Purchase. Reading Public Museum, Reading Pennsylvania.

April 8 - July 2, 2017

American Impressionism: The Lure of the Artists' Colony

Reception: April 7, 5:30 - 7:00 p.m.

Curator's Talk: May 25, 5:30 p.m.: Scott A. Schweigert, Curator of Art and Civilization, Reading Public Museum

American Impressionism was inspired by the tonal and stylistic effects of French Impressionism, but was uniquely linked with the changing face of America as it moved from an agrarian to an industrialized urban society at the turn of the century. Led by artists such as William Merritt Chase, Mary Cassatt, and John Singer Sargent, many of whom were expatriates or had traveled extensively throughout Europe, American Impressionism was fueled by both the excitement of the changing American landscape and a nostalgia for the past. It's growth as an art movement in America was significantly impacted by the growth and development of artist colonies spread mostly throughout the Northeastern United States.

This exhibit features 75 oil paintings and thirty works on paper dating to the golden age of American Impressionism, the 1880s through the 1940s. Arranged by those artists' colonies that played a critical role in the development of the style, the exhibit will examine work produced in Cos Cob and Old Lyme, Connecticut; Cape Cod, Cape Anne and Rockport, in Massachusetts; New Hope and Philadelphia in Pennsylvania; and Taos, New Mexico, among others. Featured artists include William Merritt Chase, Childe Hassam, Julian Alden Weir, John Twachtman, and Chauncey Ryder as well as American expatriates Mary Cassatt and John Singer Sargent.

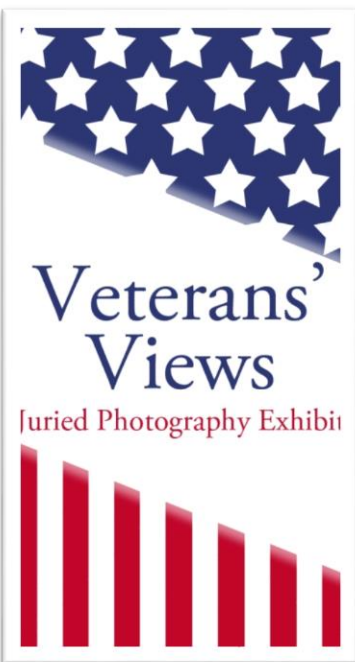
This exhibition is organized by the Reading Public Museum, Reading, Pennsylvania.

June 3 – August 27, 2017
Watercolor U.S.A. 2017

Reception: June 2, 5:30 – 7:00 p.m.
Weisel and Kelly Galleries

This is the 56th exhibition of *Watercolor U.S.A.*, a nationally known, annual juried exhibition recognizing aqueous media painting. The event is open to artists from all 50 states and U.S. territories. Organized in 1962 by the Springfield Art Museum, this exhibit seeks to showcase current trends and techniques in contemporary American watermedia. Major

cash prizes are awarded by the Museum and the Watercolor U.S.A. Honor Society including top prizes in the amount of \$3,000, \$2,000, and \$1,500. The juror for the 2017 exhibition is Laurin McCracken, an award-winning watercolorist and current president of the Watercolor U.S.A. Honor Society.



July 22 – August 27, 2017

Veterans' Views

Reception: July 21, 5:30 – 7:00 p.m.
Eldredge and Spratlen Galleries

Veterans' Views is a juried exhibition highlighting photographs taken by members of our nation's armed services and relating to their military experience. The primary goal of the exhibit is to raise awareness of our veterans' experiences during service to our country. The exhibit is organized by the Springfield Art Museum in collaboration with Drury University.

This exhibit will also feature an interactive, hands-on "Veterans' Family Tree." The public will be invited to post photocopies of family photos or other veteran-related items on the tree including but not limited to copies of military awards or medals as well as official portraits from any era.

Further programming will be announced.

July 15 - October 29, 2017

Water: The Artist's Essential Element
Armstrong Gallery

Water has been a continual source of fascination for artists throughout the ages. Not only do we have a primal connection to this life-giving substance, but water fascinates us with its beauty, power, and ability to constantly reshape the natural world. Artists have captured the subject using many different mediums; however it is the watercolor artist who combines the subject of water with the natural flowing property of the water medium itself.



Don Nice, *Palm Beach*, 1998, watercolor on paper. Collection of the Springfield Art Museum

This exhibit will feature over twenty works from the Museum's extensive collection of watermedia paintings with a focus on waterscapes. Featured artists will include J.M.W. Turner, Don Nice, Eliot O'Hara, Oliver Corbett and Anne MacDougall.

This exhibition is the fifth in a series, focusing on various artists, styles and trends, pulled exclusively from the Springfield Art Museum's outstanding collection of contemporary American aquamedia. This exhibit was organized by Cindy Quayle, Exhibitions Manager.

September 16, 2017 - February 25, 2018

Wonder Rooms: Ozark Collections

Reception: September 15, 5:30 – 7:00 p.m.

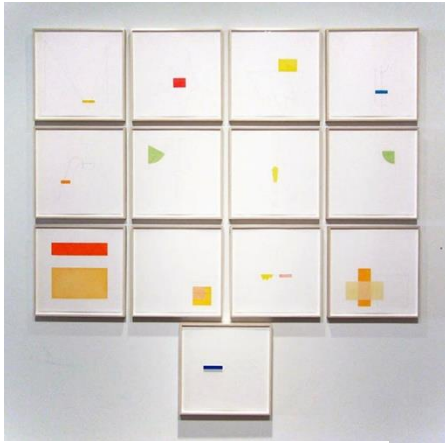
Weisel and Kelly Galleries

Modern day museums developed out of two apparently basic aspects of human nature - our curiosity and our desire to collect. Early collections were arranged and contained within private homes in rooms referred to as cabinets. These collections usually included a wide range of objects from taxidermy to paintings and sculpture. As their popularity grew, they began to be called wonder or curiosity cabinets, from the German *wunderkammer*.



The frontispiece from the *Museum Wormianum* depicting Ole Worm's cabinet of curiosities.

Wonder Rooms examines this human desire to collect, with a specific focus on private collections in Southwest Missouri, in order to discover the underlying stories and driving impulses behind collecting. The exhibit will present representative works from a number of local collections, and will feature a wide range of media arranged in 'rooms,' including ceramics, photography, outsider art, local art, furniture, prints and drawings.



December 9, 2017 - March 25, 2016
Richard Tuttle: Lines and Edges
Eldredge Gallery

Richard Tuttle has spent the majority of his career working within a very limited set of formal constraints - line, color, and form - to explore deeper issues of abstraction. His practice has encompassed a wide variety of materials including from etchings, aquatints, and woodcuts to more ordinary materials such as cardboard, Styrofoam, wire, wood, cloth and rope.

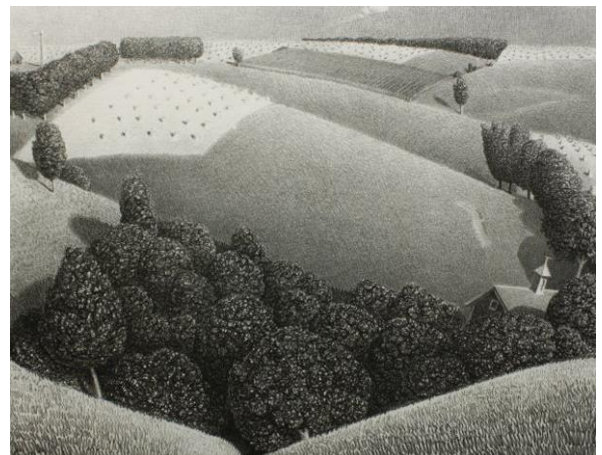
Richard Tuttle, *Line*, 2000, suite of 13 aquatints and etchings. Collection of the Springfield Art Museum.

From nearly the beginning of his career, line has been elemental to his work ranging from simple filaments of wire to thin pencil marks drawn directly on the wall. This exhibit will explore Tuttle's exploration of line within the limits of printmaking, and reflects his desire to bend those constraints outward. He is particularly interested in seeking the answer to this basic question - when does a line become a sign?

This exhibit is pulled from the Museum's permanent collections and will feature three significant portfolios by the artist including *The Edge*, *Line*, and *Edges*.

December 9, 2017 - March 25, 2016
Grant Wood: Lithographs
Spratlen Gallery

Grant Wood, born and raised in Iowa, achieved international recognition in the mid 1930s for promoting a style of art that depicted everyday scenes of Midwestern life. Coined "Regionalism," Wood, along with fellow Midwestern artists Thomas Hart Benton and John Steuart Curry, gained popularity during the Great Depression for focusing on American scenes that upheld supposedly American values.



Grant Wood, *July Fifteenth*, 1939, lithograph. Collection of the Springfield Art Museum.

Wood was both a painter and printmaker. Beginning in the late 1930s, he began making lithographs that were sold through the Associated American Artists (AAA), a company that marketed print editions by major American artists for \$5.00 each through mail-order catalogues and magazine advertisements. The reasonable price of these works allowed the public at large a chance to own a work of art by a famous contemporary artist.

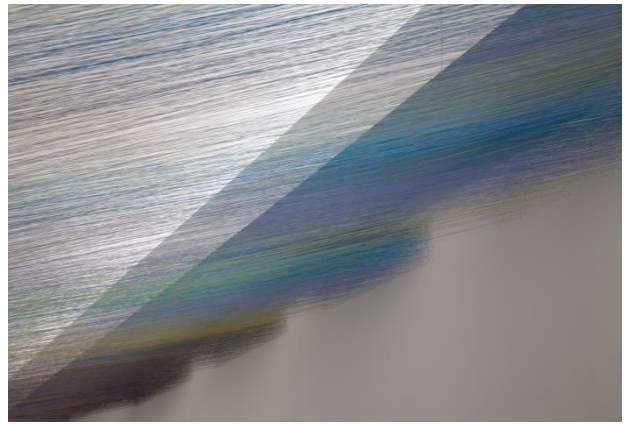
Wood produced 19 lithographs in his lifetime; 17 of these are in the Springfield Art Museum's permanent collection. This exhibit will examine Wood's thematic concerns and role in the growth and popularity of printmaking in America.

Ongoing Exhibitions

Anne Lindberg: tilted sky

King Gallery

This installation, composed of Egyptian cotton thread, spans nearly the full length of the corridor in gradated shades of color from pure white to deep blue/green. The Museum commissioned Anne Lindberg to create this permanent, site-specific work for the King Gallery; she was specifically asked to transform the architectural space from a static, pass-through like corridor, into an activated and contemplative gallery space.



Creating an American Identity

Musgrave Wing galleries

A semi-permanent installation of the Springfield Art Museum's permanent collection. The works in these galleries represent a cross section of the collection with particular emphasis paid to the ways that these works reflect our country's history as it developed its own very unique identity. This exhibit includes major work by George Caleb Bingham, Asher B. Durand, Jackson Pollock, Grandma Moses, Robert Motherwell, Wayne Thiebaud, and Alison Saar. New works rotate into this exhibit every four months.